



Introduction to Showy & Subtle Decreases

Overview

Two of the most common decreases, knit-2-together and slip-slip-knit, are getting a makeover. The result is two distinctive decreases: one that has less impact, and the other that pops off the fabric creating a new design element.

The key to these decreases is to set them up on the row before by slipping one of the two stitches to be knit together on the next row. Which one you slip depends on what you'd like the stitch to do - **hide** or **highlight**. Both have right and left leaning versions, and can work alone as a true decrease or with a variety of increases, like the yarn over, to create new stitch patterns.

The Subtle Decrease

The Subtle Decrease uses the slip stitch in the row below to eliminate a purl bump. Now the slip stitch can slide easily behind its partner. This minimizes the ridge between the decrease and the fabric. Take a look at the Subtle Right chart. Picture how your needle will enter the two stitches ... first through the knit stitch, then the slipped stitch to its right.

- ▶ The Subtle charts show a true decrease, such as you might use in waist or arm hole shaping or the ruffle shown above. You could run a series of Subtle Decreases with the eyelet, but this will be more common.

The Showy Decrease

But what if you wanted the decrease to show? This time we'll reverse the order and you'll see what happens when the slipped stitch sits on top. Compare the chart for the Showy Right Decrease to the Subtle Right Decrease above it:

- ▶ The slip stitch is now on the left. It will be the first one your needle enters as you work the k2tog decrease. As a result, the elongated stitch is sitting on top of its partner rising above the knit fabric.
- ▶ In both Showy Decrease charts, the yarn over is on the outside of the decrease. This is the set up for a string of diagonal decreases as shown in the pattern to the right.

The Left Leaning Decrease (ssk)

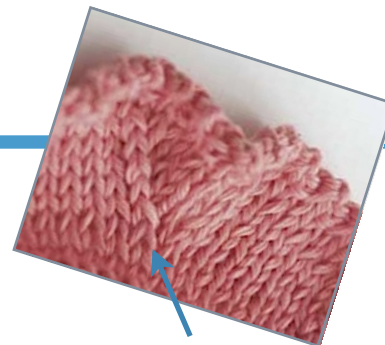
The traditional, right-slanting k2tog is pretty straight forward and well behaved. It doesn't require any fiddling with stitches and lies pretty well in the fabric. But its left leaning cohort has always been a bit wonky .

The stitches of the left slanting decrease need to be reoriented in order to lie flat (ssk) and, try as we might, the two just never looked exactly the same ... until now. The right and left slanting Showy Decreases are perfectly matched and the Subtle versions look more alike and are less noticeable than before.

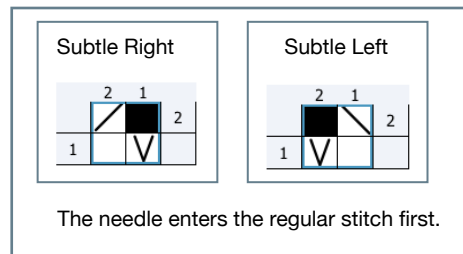
Joining decreases and more ... With the Showy Decrease you can join right and left decrease line in ways that have just not been possible before. And just wait till you see what the Showy Decrease can do for hat tops!

More pictures and examples are available on our Photobucket.com page.

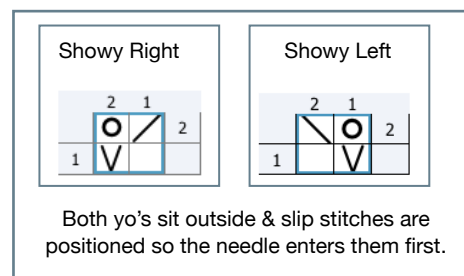
Note: Many have searched for matching or less noticeable decreases so you will find other alternatives from other knitters if you search for them online.



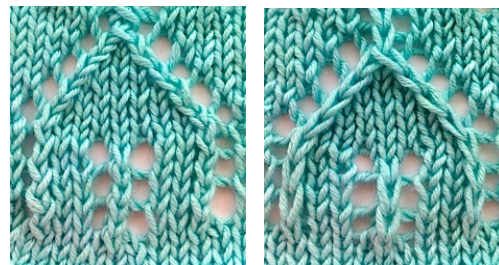
Subtle Decrease



Showy Decrease



Before & After



Not only to the right and left leaning decreases match, they rise up off the fabric, adding more texture..

Want More Information?

You can find it on our web site. Our blog has an entire category dedicated to the Showy Decrease with detailed posts that include sample swatches.

<input type="checkbox"/>	knit
<input checked="" type="checkbox"/>	k2tog
<input checked="" type="checkbox"/>	ssk
<input checked="" type="checkbox"/>	slip
<input checked="" type="checkbox"/>	yo

Blog.KnittingNuances.com