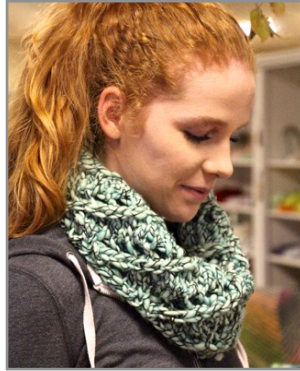




# Malabrigo Caracol Cowl



Gauge
▶ Label gauge: 2.0 to 2.5 sts = 1" in stockinette.
▶ Gauge in pattern: 2.25 sts per 1"
▶ Needle: US 15 (10mm), 24" long circular
Size
▶ 25" around, 10" high unfolded. Steam Blocked
Yarn
▶ Malabrigo Caracol: 150 gm = 90 yds, superwash Merino wool. Sample color = 03 Water Green



## Knitting Instructions

- ▶ Cast on 54 sts with long-tail cast on, do not join, turn (cast on tail about 6.5')
- ▶ Next Row: knit across, do not join, turn
- ▶ Next Row: \*k1, k1rb\*, join

Repeat Rounds

- ▶ Rnd 1 (setup): \*k4, sl1, k1\*
- ▶ Rnd 2 (decrease): \*k2, k3tog, yo, k1b&f\*

Working end of round transition:

K3tog spiral pattern above continues and will cross the beginning of round. Here's how to recognize when to start a new round.

- ▶ Rnd 1 (setup): knit all sts except decrease line which is slipped (1 sts before a yarn over. When there is no yarn over it's time to start decrease rnd.
  - ▶ Rnd 2 (decrease): knit to 2 sts before raised line. \*k3tog, yo, k1b&f, k2\*
- Note: at the end of setup round there will only be 3 sts before the first k3tog, this is corrected at the end of the next decrease rnd.*

Work a total of 13 Showy Decrease sets (count the raised slip sts) ending with a decrease rnd.

Finishing:

- ▶ Next Rnd: purl (*see video for turn and knit alternative*)
- ▶ Next Rnd: \*k1, k1rb\* working the k1rb into Showy Line
- ▶ Next Rnd: turn to work in reverse direction. k2tog bind off
- ▶ Steam block. To wear: fold in half for thick cowl.

Links on our website: [KnittingNuances.com/JimmyBeans](http://KnittingNuances.com/JimmyBeans)

1. Download PDF pattern
2. Project video tutorial / demonstration
3. Intro to the Showy Decrease
4. Why Knit 1 Back and Front (vs. traditional F&B)

k1rb = knit 1 row below

### About Showy Decreases

The Showy Decrease joins a series of decreases (k3tog in this case) with a slip stitch on the next round. This creates a raised line that is easy to spot in the pattern. This is a visual project, spotting the pattern in the knitting is much simpler than counting stitches.

There are two types of rounds:

1. set up in which you knit all sts except the decrease line which is slipped.
2. decrease where the k3tog and partner increases are worked.

### The Increases

The 2 increases are a yarn over followed by a knit 1 back and front. This results in a nice open eyelet stitch.

k1b&f: slip 1 knitwise, replace on left needle (reorients st) k1 into back, k1.

